



**CLOTHING**  
2008



*Go your own way*

**TRIUMPH**

	PAGES
<b>Leather Mens</b>	
Urban Sport	4 - 5
Modern Classic	5 - 7
Off bike	7
Cruiser	7 - 8
Jeans	8
<b>Leather Ladies</b>	
Urban Sport	8
Modern Classic	9
Cruiser	9
<b>Textile Mens</b>	
Urban Sport	10 - 11
Modern Classic	11 - 13
Off bike	14
Jeans	15
Team	16
Rain	16
<b>Textile Ladies</b>	
Urban Sport	16 - 17
Modern Classic	17
Jeans	18
<b>Gloves &amp; Boots</b>	19 - 20
<b>Casual Mens</b>	
Casual - Zip thru's & shirts	21
- T Shirts	22 - 24
Team - Shirts	25
RAT - Fleeces, T Shirts & polos	25
<b>Casual Ladies</b>	
Casual & RAT - Zip thru's & shirts	26
- T Shirts & vests	27 - 28
<b>Children</b>	
Hoodies & T Shirts	29
<b>Personal Accessories</b>	
Watches	29
Caps and beanies	30
Belts and Buckles	30
Gift items	31 - 32
Rucksacks and bags	32 - 33
<b>Size Chart</b>	33



## Clothing

### The perfect blend of looks and performance

Motorcycle clothing should be designed just as well as the bike you ride. Not only does it have to look good, it must also perform in extreme conditions. This kind of work can only be trusted to one company. Triumph.

The result is a line of performance and casual clothing that is as stylish and individual as your bike.

Jackets are tailored to fit comfortably, whether you're riding or not. All clothing is cut to account for the difference between sport riding on a Daytona 675, chilling out on a Bonneville, or cruising on a Rocket III.

Triumph's leather wear is made only from full grain leather. We use a Sympatex membrane to let our clothing breathe while still keeping wet weather out.

The protective armor we use is supplied by Knox, world leaders in impact protection for motorcyclists - including MotoGP and Superbike riders.

Triumph test riders wear everything we design for thousands of miles on real roads. The result? Clothing that not only performs, but looks great when you're out on the town.

[www.triumphmotorcycles.com](http://www.triumphmotorcycles.com)



IF

TRIUMPH  
MOTORCYCLES

GREAT BRITAIN

# MENS LEATHER urban sport

## URBAN SPORT

### FREEWAY JACKET

- 1.2mm leather
- Fully perforated leather panels on the front, arm and back
- Windproof and water resistant removable liner
- Easily removable CE95 shoulder and elbow protectors
- Side adjustment zippers
- Double stitched impact seams
- Dual density back insert
- Waist connection zipper supplied
- 3M® night reflective front and rear piping
- Small leather back logo
- Broad fitting style

Sizes 38 - 56 inches



## URBAN SPORT

### ARROW JACKET

- 1.2mm leather
- Easily removable CE95 shoulder and elbow protectors
- Double stitched impact seams
- Dual density back insert
- 3M® night reflective front and rear piping and fabric panels
- Large leather back logo
- Option to fit fleece neck warmer
- Waist connection zipper supplied
- Air Flow Tech – ventilation air flow panels; arm and back
- Straight fitting style

Sizes 38 - 56 inches



## URBAN SPORT

### GENETIX JACKET

- 1.2mm leather
- Easily removable CE95 shoulder and elbow protectors
- Double and triple stitched impact seams
- Dual density back insert
- Removable aluminum windproof liner
- Removable fleece neck warmer
- 3M® night reflective front and rear piping
- Hidden ventilation panels
- Waist connection zipper supplied
- Straight fitting style

Sizes 38 - 56 inches



URBAN SPORT  
**HAWK JACKET**  
 1.2mm leather  
 Easily removable CE95 shoulder and elbow protectors  
 Double stitched impact seams  
 Dual density back insert  
 3M® night reflective front and rear piping  
 Option to fit fleece neck warmer  
 Waist connection zipper supplied  
 Straight fitting style  
**Sizes** 38 - 52 inches

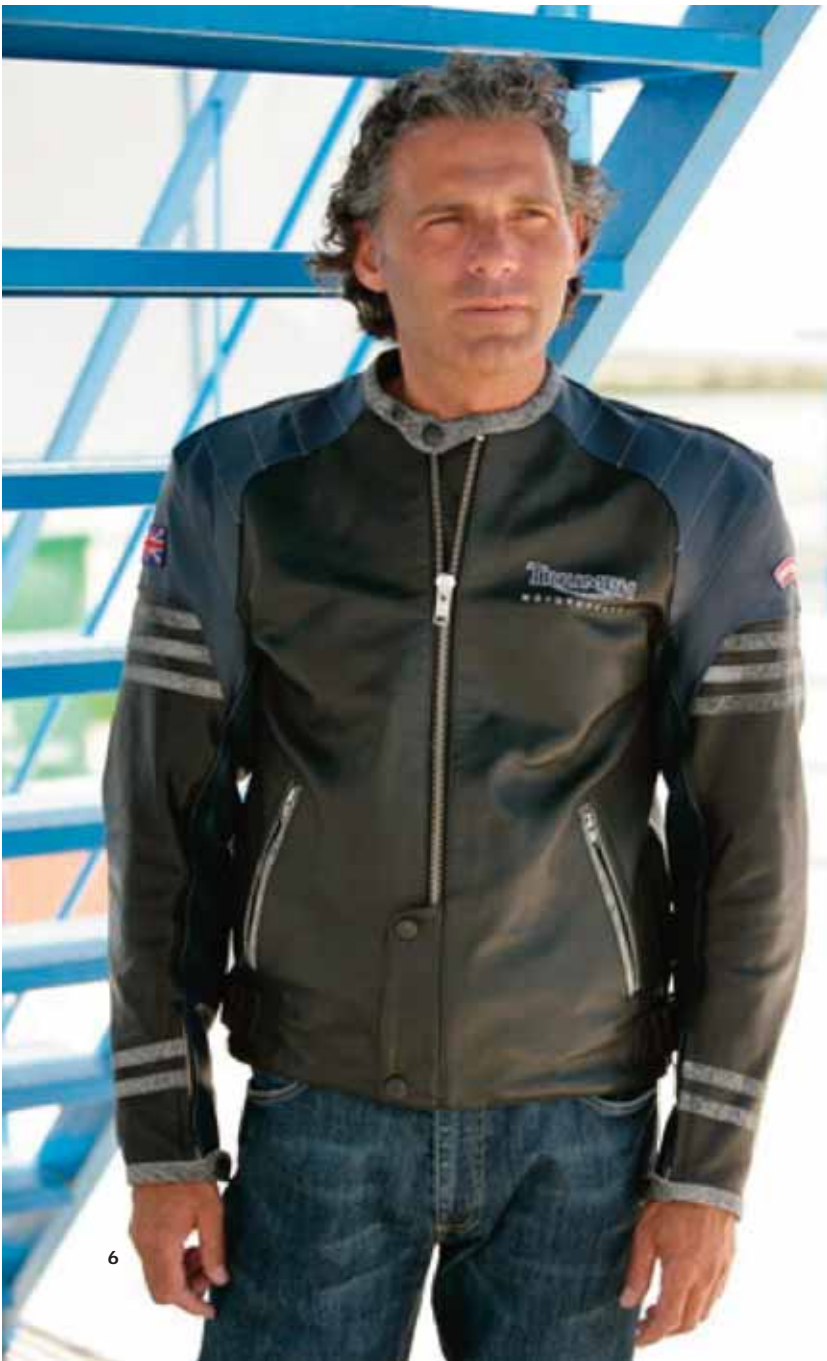
MENS LEATHER  
 modern classic

MODERN CLASSIC  
**RIVTON JACKET**  
 1mm leather  
 Easily removable CE95 shoulder and elbow protectors  
 Double stitched impact seams  
 3M® night reflective front and rear piping  
 Option to fit fleece neck warmer  
 Waist connection zipper supplied  
 Straight fitting style  
**Sizes** 38 - 56 inches



MODERN CLASSIC  
**PORTLAND JACKET**  
 1mm leather  
 Easily removable CE95 shoulder and elbow protectors  
 Double stitched impact seams  
 Option to fit fleece neck warmer  
 Waist connection zipper supplied  
 Stitch detailed back logo  
 Straight fitting style  
**Sizes** 38 - 52 inches

MENS LEATHER  
modern classic



MODERN CLASSIC  
**RETRO RACER LEATHER JACKET**  
1mm leather  
Easily removable CE95  
shoulder and elbow protectors  
Double stitched impact seams  
Option to fit fleece neck warmer  
Waist connection zipper supplied  
Stitched detailed back logo  
Straight fitting style

Sizes 38 - 56 inches



MODERN CLASSIC  
**RETRO JACKET**  
1.2mm leather  
Easily removable CE95 shoulder  
and elbow protectors  
Double stitched impact seams  
Large leather back logo  
Option to fit fleece neck warmer  
Waist connection zipper supplied  
Straight fitting style

Sizes 38 - 56 inches



MODERN CLASSIC  
**ROMERO JACKET**  
1.2mm leather  
Easily removable CE95 shoulder  
and elbow protectors  
Double stitched impact seams  
Large leather back logo  
Option to fit fleece neck warmer  
Waist connection zipper supplied  
Straight fitting style

Sizes 38 - 52 inches





## MENS LEATHER off bike



MODERN CLASSIC  
**MADISON JACKET**  
Antiqued leather  
Printed distressed back logo  
Pockets for protectors  
Straight fitting style  
Sizes 38 - 52 inches



OFF BIKE  
**MONCLAR JACKET**  
Nubuck leather  
Multi-color zippers  
Sizes 38 - 52 inches



CRUISER  
**DEAN JACKET**  
1.2-1.4mm soft leather  
Removable aluminum vest liner  
Antiqued brass snaps and zippers  
Large embossed leather back logo  
Broad fitting style  
Sizes 38 - 56 inches



## MENS LEATHER cruiser

CRUISER  
**SAMFORD JACKET**  
1mm leather  
Easily removable CE95 shoulder and elbow protectors  
Double leather stitched impact seams  
Hidden ventilation panels  
Large embossed back logo  
Option to fit fleece neck warmer  
Waist connection zipper supplied  
Broad fitting style  
Sizes 38 - 56 inches





CRUISER  
**ROCKET 08 JACKET**  
 1.2 – 1.4mm soft leather  
 Easily removable CE95 shoulder and elbow protectors  
 Double stitched impact seams  
 Removable aluminum vest liner  
 3M® night reflective front and rear piping  
 Hidden ventilation panels  
 Snap down collar  
 Large embossed back logo  
 Option to fit a fleece neck warmer  
 Waist connection zipper supplied  
 Broad fitting style

Sizes 38 - 56 inches

## MENS LEATHER jeans



URBAN SPORT  
**RAVEN JACKET**  
 1.2mm leather  
 Easily removable CE95 shoulder and elbow protectors  
 Double stitched impact seams  
 Dual density back insert  
 3M® night reflective front and rear piping  
 Large leather back logo  
 Option to fit fleece neck warmer  
 Waist connection zipper supplied

Sizes XS - 2L INT



CRUISER  
**WESTBOURNE JACKET**  
 1.2mm leather  
 Easily removable CE95 shoulder and elbow protectors  
 Double stitched impact seams  
 Removable aluminum windproof liner  
 3M® night reflective front and rear piping  
 Hidden ventilation panels  
 Large embossed back logo  
 Waist connection zipper supplied  
 Broad fitting style

Sizes 38 - 56 inches

JEANS  
**SPORT LEATHER JEANS III**  
 1.2mm leather

Removable CE95 knee protectors  
 Adjustable knee protector pockets  
 Double leather seat, knee and thigh panels  
 Keptec® stretch panels  
 Double stitched impact seams  
 3M® night reflective fabric  
 Hip padding  
 Velcro attached knee sliders  
 Air Flow Tech – ventilation air flow panels, thigh  
 Waist connection zipper supplied

Sizes 30 - 42 inches



## MENS LEATHER cruiser

## LADIES LEATHER urban sport

## LADIES LEATHER modern classic



### MODERN CLASSIC EMBER JACKET

1.2mm leather  
Easily removable CE95 shoulder and elbow protectors  
Double stitched impact seams  
Stitch detailed back logo  
Option to fit fleece neck warmer  
Waist connection zipper supplied

Sizes XS - 3L INT



### MODERN CLASSIC RETRO RACER LEATHER JACKET

1mm leather  
Easily removable CE95 shoulder and elbow protectors  
Double stitched impact seams  
Stitched detailed back logo  
Option to fit fleece neck warmer  
Waist connection zipper supplied

Sizes XS - 3L INT

## LADIES LEATHER cruiser

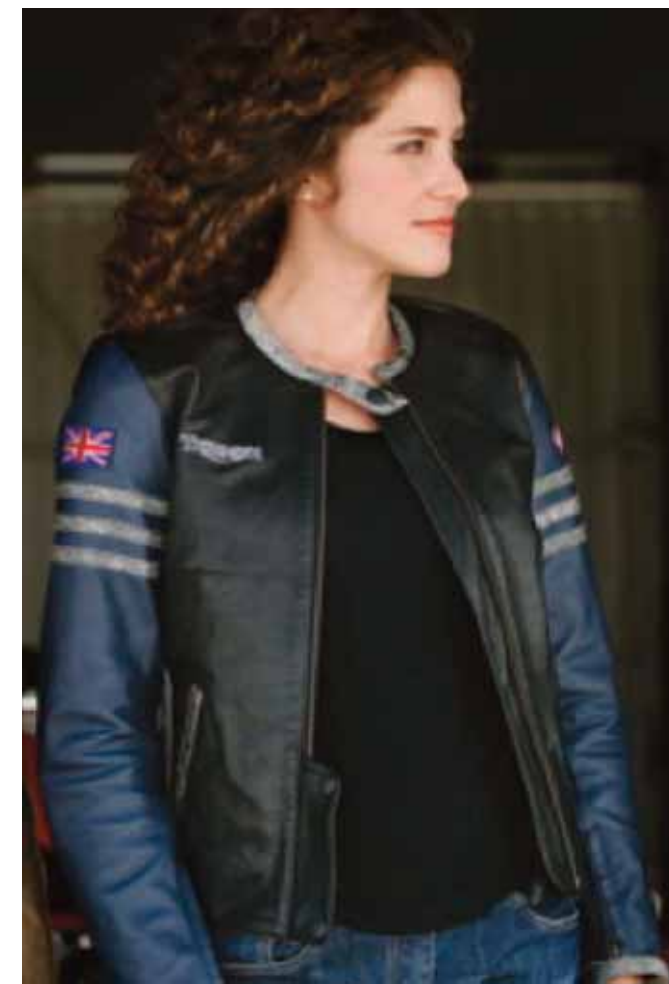
CRUISER  
COMPTON JACKET  
1mm leather  
Easily removable CE95 shoulder and elbow protectors  
Double stitched impact seams  
Hidden ventilation panels  
Option to fit fleece neck warmer  
Waist connection zipper supplied

Sizes XS - 3L INT



CRUISER  
ROXY JACKET  
1mm leather  
Easily removable CE95 shoulder and elbow protectors  
Double stitched impact seams  
Printed distressed back logo  
Option to fit fleece neck warmer  
Waist connection zipper supplied

Sizes XS - 3L INT





## MENS TEXTILE urban sport

URBAN SPORT  
**SYMPATEX® PANTHA JACKET**  
Waterproof, breathable and windproof  
Hitena® nylon water repellent outer fabric\*  
Removable CE95 shoulder and elbow protectors  
Removable quilted liner  
Removable dual density back insert  
Printed back logo  
Sleeve width adjusters  
3M® night reflective tape  
Option to fit fleece neck warmer  
Waist connection zipper supplied  
Air Flow Tech – ventilation air flow panels; front, arm and back

Sizes XS - XXXL INT



URBAN SPORT  
**SYMPATEX® SPEED JACKET**  
Waterproof, breathable and windproof  
Cordura® and denim water repellent outer fabric  
Removable CE95 shoulder and elbow protectors  
Removable dual density back insert  
3M® night reflective tape  
Option to fit fleece neck warmer  
Waist connection zipper supplied  
Air Flow Tech – ventilation air flow panels; front, arm and back

Sizes 38 - 52 inches



### Take our jackets for a dry run

You can ride a bike in pretty much any kind of weather provided you're dry.

That's why we use Sympatex® in our clothing.

Sympatex® is a clever, polyester-based membrane that allows vapour to escape (so you don't get damp) but keeps wet weather out. It doesn't rely on tiny holes to work, so unlike some technical membranes it won't gradually block with dirt and become less effective over time.

Sympatex® is a German company with 25 years' experience of making waterproof products and whilst they use their ingenuity trying to make our products leak under lab conditions, we do our torture tests with Triumph test riders on real roads.

Result?

Clothing that could keep blotting paper dry in a monsoon.

\*Hitena® is a highly abrasion resistant material with a twisted yarn.



URBAN SPORT  
**RAPTOR # 2 MESH JACKET**  
 Fully perforated mesh panels and  
 Hiltena® construction\*  
 Easily removable CE95 shoulder and  
 elbow protectors  
 Windproof and water resistant  
 removable liner  
 Removable dual density back insert  
 Sleeve width adjusters  
 3M® night reflective piping  
 Waist connection zipper supplied  
 Option to fit fleece neck warmer

Sizes 38 - 56 inches



URBAN SPORT  
**INTEGRA JACKET**  
 Fully perforated panels and  
 Cordura® construction  
 Integrated waterproof cover  
 Removable CE95  
 shoulder and elbow protectors  
 Removable dual density back insert  
 Sleeve width adjusters  
 3M® night reflective tape  
 Waist connection zipper supplied

Sizes 38 - 56 inches



## MENS TEXTILE modern classic

MODERN CLASSIC  
**DENIM JACKET**  
 Ring-spun washed denim outer fabric  
 \*Keptec® reinforced shoulder and  
 elbow panels

Sizes 38 - 56 inches

\*Keptec® is a combination of Kevlar® and  
 Cordura®, and it is 5 times stronger than steel,  
 gram for gram and extremely tear resistant.



MENS TEXTILE  
modern classic



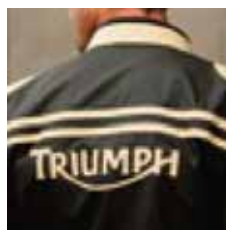
MODERN CLASSIC  
**RETRO PADDOCK JACKET**  
Cordura® water repellent outer fabric  
Removable quilted liner  
Removable CE95  
shoulder and elbow protectors  
Hidden ventilation panels  
Large leather back logo  
Option to fit fleece neck warmer  
Waist connection zipper supplied

Sizes S - XXL INT



MODERN CLASSIC  
**CAMDEN JACKET**  
Cotton ripstop water repellent outer fabric  
Removable CE95  
shoulder and elbow protectors  
Hidden polycordura panels in shoulders and  
arms for extra protection  
3M® night reflective front and back piping  
Option to fit fleece neck warmer  
Waist connection zipper supplied

Sizes 38 - 52 inches



MODERN CLASSIC  
**CONNAUGHT JACKET**  
Oxford nylon water repellent outer fabric  
Removable CE95 shoulder and elbow protectors  
Large leather back logo  
Option to fit a fleece neck warmer  
Waist connection zipper supplied

Sizes 38 - 56 inches



MODERN CLASSIC  
**ROCHESTER MESH JACKET**  
 Fully perforated mesh panels and  
 Cordura® construction  
 Removable CE95  
 shoulder and elbow protectors  
 Large leather back logo  
 Waist connection zipper supplied  
**Sizes** 38 - 56 inches



MODERN CLASSIC  
**RETRO RACER PADDOCK JACKET**  
 Cordura® water repellent outer fabric  
 Removable quilted liner  
 Removable CE95  
 shoulder and elbow protectors  
 Hidden ventilation panels  
 Large embroidered back logo  
 Option to fit fleece neck warmer  
 Waist connection zipper supplied  
**Sizes** S - XXXLINT



MENS TEXTILE  
off bike

OFF BIKE  
**CAMO JACKET**  
Cotton ripstop camouflage outer fabric  
Pockets for shoulder and  
elbow protectors  
Sizes 38 - 52 inches



OFF BIKE  
**STANTON JACKET**  
Water repellent cotton outer fabric  
Removable quilted liner  
Pockets for shoulder and  
elbow protectors  
Sizes S - XXXL INT



# MENS TEXTILE jeans



JEANS

### WESTERN JEANS

Waterproof, breathable and windproof  
Cordura® water repellent outer fabric  
Easily removable CE95 knee protectors  
Adjustable knee protector pockets – allow  
varying leg lengths  
Double stitched impact seams  
Reinforced knee and seat areas  
Boot cut

Sizes 30 - 42 inches



JEANS

### SYMPATEX RIDING PANTS

Waterproof, breathable and windproof  
Hitena® nylon water repellent outer fabric\*  
Easily removable CE95 knee protectors  
Adjustable knee protector pockets  
Double stitched impact seams  
Hip padding  
Removable quilted liner  
Reinforced knee and seat areas  
Ankle to thigh zippers  
Air Flow Tech – ventilation air flow panels  
3M night reflective fabric panels  
Fabric smocking above knee  
3M logo detail on legs  
Waist connection zipper supplied

Sizes 30 - 42 inches



JEANS

### RAPTOR VENTED JEANS

Cordura® construction  
Fully perforated mesh  
thigh, shin and calf panels  
Easily removable CE95 knee protectors  
Waist connection zipper supplied

Sizes 30 - 42 inches



JEANS

### DENIM JEANS

Ring-spun washed denim outer fabric  
Keprotect® reinforced panels – knee and seat  
Variety of leg lengths available

Sizes 30 - 42 inches



\*Hitena® is a highly  
abrasion resistant  
material with a  
twisted yarn.

Triumph Denim Jeans are designed for Triumph riders for use on or off the bike. The hidden Keprotect® reinforced panels offer increased abrasion resistance. Keprotect is a combination of Kevlar® and Cordura®, and it is 5 times stronger than steel, gram for gram and extremely tear resistant.



TEAM  
**TEAM BLOUSON**  
 Water repellent outer fabric  
 Large embroidered back logo  
**Sizes** S - XXXL INT

## MENS TEXTILE team



TEAM  
**COLLEGE JACKET**  
 Melton Body  
 Large leather back logo  
**Sizes** XS - XXL INT

## LADIES TEXTILE urban sport



URBAN SPORT  
**SYMPATEX® SEETA JACKET**  
 Waterproof, breathable and windproof  
 Hitena® nylon water repellent outer fabric\*  
 Removable CE95 shoulder and elbow protectors  
 Removable quilted liner  
 Removable dual density back insert  
 Printed back logo  
 Sleeve width adjusters  
 3M® night reflective tape  
 Option to fit fleece neck warmer  
 Waist connection zipper supplied  
 Air Flow Tech – ventilation air flow;  
 front, arms and back  
**Sizes** XS - 3L INT

## MENS TEXTILE rain

RAIN  
**RAPTOR WATERPROOF PULLOVER**  
 Waterproof and windproof  
 Ripstop outer fabric  
 3M® night reflective panel  
 Sleeve with adjuster  
 Also available in ladies sizes  
 Triumph logo on back  
**Sizes** S - XL INT



RAIN  
**CHEVRON OVERSUIT**  
 Waterproof nylon fabric  
 Step in – step out design  
 2 full length zippers  
 3M® night reflective  
 chevron shoulder design  
 3M® night reflective  
 slash back stripe  
 Bumbag for storage  
**Sizes** XS - XXL INT



RAIN  
**CHEVRON 2 PIECE OVERSUIT**  
 Waterproof nylon fabric  
 2 large storage pockets on jacket  
 3M® night reflective chevron  
 shoulder design  
 Ankle to knee length zippers  
 Jacket and pants available separately

**Jacket Sizes** XS - XXL INT

**Pants Sizes** XS - XXL INT

LADIES TEXTILE  
modern classic

MODERN CLASSIC  
**DENIM JACKET**  
Ring-spun washed denim outer fabric  
\*Kepritec® reinforced shoulder and elbow panels  
Sizes XS - 3L INT



URBAN SPORT  
**INTEGRA JACKET**  
Fully perforated panels and Cordura® construction  
Integrated waterproof cover  
Removable CE95 shoulder and elbow protectors  
Removable dual density back insert  
Sleeve width adjusters  
3M® night reflective tape  
Waist connection zipper supplied  
Sizes XS - 3L INT

\*Kepritec® is a combination of Kevlar® and Cordura®, and it is 5 times stronger than steel, gram for gram and extremely tear resistant.

\*Hitena® is a highly abrasion resistant material with a twisted yarn.



JEANS  
**DENIM JEANS**  
 Ring-spun washed denim outer fabric  
 Keptotec® reinforced knee and seat panels  
**Sizes XS - 3L INT**



JEANS  
**WESTERN JEANS**  
 Waterproof, breathable and windproof  
 Cordura® water repellent outer fabric  
 Easily removable CE95 knee protectors  
 Adjustable knee protector pockets  
 Double stitched impact seams  
 Reinforced knee and seat areas  
 Boot cut  
**Sizes XS - 3L INT**



JEANS  
**RAPTOR VENTED JEANS**  
 Cordura® construction  
 Fully perforated mesh  
 thigh, shin and calf panels  
 Easily removable CE95 knee protectors  
 Waist connection zipper supplied  
**Sizes XS - 2L INT**



JEANS  
**SYMPATEX® RIDING PANTS**  
 Waterproof, breathable and windproof  
 Hitena® nylon water repellent outer fabric\*  
 Easily removable CE95 knee protectors  
 Adjustable knee protector pockets  
 Double stitched impact seams  
 Removable quilted liner  
 Reinforced knee and seat areas  
 Ankle to thigh zippers  
 Air Flow Tech – ventilation air flow panels  
 3M® night reflective fabric panels  
 3M® logo detail on legs  
 Waist connection zipper supplied  
**Sizes XS - 3L INT**

## LADIES TEXTILE jeans

Triumph Denim Jeans are designed for Triumph riders for use on or off the bike. The hidden Keptotec® reinforced panels offer increased abrasion resistance. Keptotec is a combination of Kevlar® and Cordura®, and it is 5 times stronger than steel, gram for gram and extremely tear resistant.

\*Hitena® is a highly abrasion resistant material with a twisted yarn.

# MENS AND LADIES GLOVES



**HIGHWAY GLOVE**  
All leather construction  
Double leather palm section  
Keptec® abrasion panels  
Double leather impact panels  
Ventilated finger panels  
Available in ladies sizes

Mens S - XXL INT  
Ladies LS - LL INT



**PERFORATED HIGHWAY GLOVE**  
Perforated version of the Highway Glove  
Available in ladies sizes

Mens S - XXL INT  
Ladies LS - LL INT



**RAPTOR VENTED GLOVE**  
Perforated mesh fabric and leather construction  
Ventilated hard knuckle panels  
Slimline sports cuff with adjuster  
Keptec® abrasion panels  
Available in ladies sizes

Mens S - XXL INT  
Ladies LS - LL INT



**HARD CARBON GLOVE**  
Full knuckle carbon weave panel  
Keptec® abrasion panels  
Double leather impact panels  
Raised wrist padding  
3M® night reflective piping  
Ventilated finger sections  
Available in ladies sizes

Mens S - XXL INT  
Ladies LS - LL INT



**COUGA GLOVE**  
Hitena® and leather construction\*  
Hard knuckle panels  
Keptec® abrasion panels  
Raised wrist padding  
Non slip palm and finger panels

Mens XS - XXL INT



**SYMPATEX® ALL LEATHER II GLOVE**  
Waterproof, breathable and windproof  
All leather construction  
Keptec® abrasion panels  
Raised wrist padding  
3M® night reflective piping  
Thinsulate lining  
Visor wipe

Mens XS - XXL INT



**ROADSTER GLOVE**  
Hitena® and leather construction\*  
Ventilated hard knuckle panels  
Keptec® abrasion panels  
Non slip palm panels  
3M® night reflective piping  
Raised wrist padding  
Double strap wrist fastening

Mens XS - XXL INT



**SYMPATEX® EXPEDITION GLOVE**  
Waterproof, breathable and windproof  
Hitena® and leather construction\*  
Hard knuckle panels  
Keptec® abrasion panels  
Raised wrist padding  
3M® night reflective piping  
Thinsulate lining  
Visor wipe  
Double strap wrist fastening

Mens XS - XXL INT

\*Hitena® is a highly abrasion resistant material with a twisted yarn.

## MENS AND LADIES BOOTS



**SYMPATEX® EXPEDITION II BOOT**  
 Waterproof, breathable and windproof  
 Full leather construction  
 Gear change protector  
 Ankle, heel and shin guards  
 Logos embossed  
 3M® night reflective panel  
 Non slip rubber sole  
 Toe slider

Sizes 7.5 - 12



**TEAM BOOT**  
 Ballistic nylon and leather construction  
 Non slip rubber sole

Sizes 7.5 - 12

**SYMPATEX® EXPLORER II BOOT**  
 Waterproof, breathable and windproof  
 Leather and nubuck construction  
 Gear change protector  
 Ankle and heel guards  
 Velcro fastening  
 3M® night reflective panel  
 Non slip rubber sole  
 Available in ladies sizes

Sizes 5.5 - 12



**SYMPATEX® TRITECH II BOOT**  
 Waterproof, breathable and windproof  
 Leather construction  
 Ankle guards  
 3M® night reflective panel  
 Non slip rubber sole  
 Available in ladies sizes

Sizes 5.5 - 12



**HIGHWAY BOOT**  
 Full leather construction  
 Antiqued Adjusters  
 Logos embossed  
 Non slip rubber sole  
 Available in ladies sizes

Sizes 5.5 - 12

# MENS CASUAL zip thru's and shirts



**YELLOW ZIP THRU**  
Yellow/Black  
Sizes S - XXL INT

**FASHION SHIRT #4**  
Black  
Slim fit  
Sizes S - XXL INT



**PULLOVER HOODIE**  
Black  
Sizes S - XXL INT

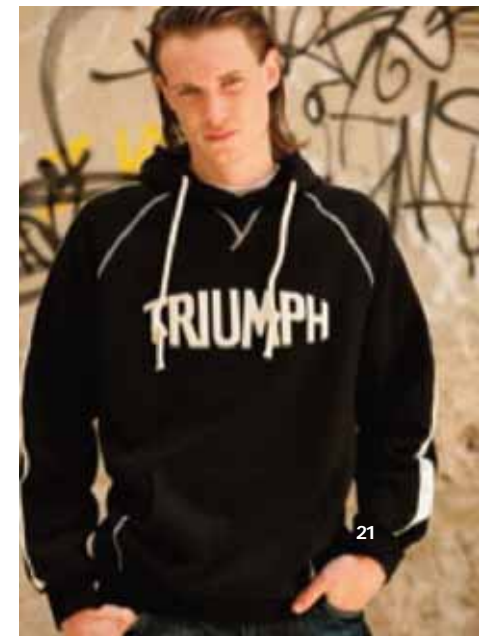


**BROWN ZIP THRU**  
Brown  
Sizes S - XXL INT



**STRIPE ZIP THRU**  
Navy  
Sizes S - XXL INT

**RIDERS ZIP THRU**  
Navy/Red/Ecru  
Sizes S - XXL INT



MENS **CASUAL**  
sixty8 T shirts



Triumph's range of vintage sixty8 T-shirts are inspired by classic images from our archive of vintage tees, period ads and posters. With a modern re-mix, these T-shirts are the authentic alternative.

'Land Speed Record' is from the range of Triumph vintage sixty8 T shirts.

This T shirt celebrates a very special individual feat. On September 6th 1956, Johnny Allen from Texas broke the world land speed record at the Bonneville Salt Flats Utah, one of the hottest places on earth.

He used a 650cc unsupercharged, streamlined Triumph and managed a blistering speed of 214mph for one mile. Remarkably, only standard parts were used.



*September 6th, 1956  
Bonneville Salt Flats, Utah*



**LAND SPEED RECORD**  
Mustard  
Sizes S - XXL INT



**DYLAN**  
Navy  
Sizes S - XXL INT



**DYLAN**  
White  
Sizes S - XXL INT



**CYCLEDELIC**  
Black  
Sizes S - XXL INT



**VIVA KNIEVEL**  
Blue  
Sizes S - XXL INT



**SIXTY8**  
Red  
Sizes S - XXL INT



**MOD CRUSHERS CLUB**  
Navy  
Sizes S - XXL INT



**FLYING BIKE**  
Orange  
Sizes S - XXL INT



**DECO #1**  
Burgundy  
Sizes S - XXL INT



MENS CASUAL  
T shirts



FELT LOGO  
Grey  
Sizes S - XXL INT



JAPAN  
Red  
Sizes S - XXL INT



EST 1902  
Navy  
Sizes S - XXL INT



GAMBLING  
Burgundy  
Sizes S - XXL INT



BONNEVILLE GUITARS  
Brown  
Sizes S - XXL INT



GB  
Navy  
Sizes S - XXL INT



RUSSIAN IMPORTER  
Black  
Sizes S - XXL INT

# MENS CASUAL T shirts



2 IN 1  
Black

Sizes S - XXL INT



STUNT TEAM  
Grey

Sizes S - XXL INT



ROCKET III #5  
Black

Sizes S - XXL INT



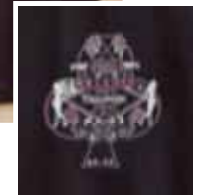
SCRAMBLER  
Red

Sizes S - XXL INT



FABULOUS HINCKLEY  
Black

Sizes S - XXL INT



RIDERS  
White

Sizes S - XXL INT



PUNK  
Black

Sizes S - XXL INT



MOTORCYCLE CLUB  
Light Blue

Sizes S - XXL INT



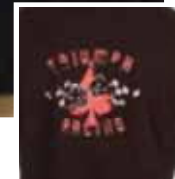
CAMO LOGO  
Black

Sizes S - XXL INT



TRIUMPH RACING  
Black

Sizes S - XXL INT



MENS CASUAL  
team and RAT



TEAM SHIRT #2  
Navy  
Straight fit  
Sizes XS - XXXL INT

RAT products are specially developed with Triumph's own riders in mind, this is a range of clothing for wearing off bike or under your motorcycle kit. The range includes clothing with a high level of technical performance to give you maximum comfort in all riding conditions: Tri-Thermo to keep you warm without the need for bulky layers; Tri-Dri to wick moisture away from the body. Thinking of crossing the Gobi on a sunny day? No sweat.



RAT T-SHIRT  
Navy  
Sizes S - XXL INT

RAT T-SHIRT  
White  
Sizes S - XXL INT

RAT STRIPE POLO  
Grey/Black  
Sizes S - XXL INT

RAT TRI-DRI MENS PERFORMANCE TOP  
Black/Grey  
Sizes S - XXL INT



RAT TRI-DRI POLO SHIRT  
Black/Grey  
Sizes S - XXL INT



RAT TRI-THERMO FLEECE  
Black  
Sizes S - XXL INT

LADIES **CASUAL**  
zip thru's and shirts



VELOUR ZIP THRU  
Plum  
Sizes XS - 2L INT



RAT TRI-DRI LADIES PERFORMANCE TOP  
Black/Grey  
Sizes XS - 3L INT

RAT products are specially developed with Triumph's own riders in mind, this is a range of clothing for wearing off bike or under your motorcycle kit.

The range includes clothing with a high level of technical performance. Tri-Dri allows perspiration to wick away from the body.



FASHION SHIRT #4  
Black  
Sizes XS - 2L INT

## LADIES CASUAL T shirts and vests



DYLAN  
White  
Sizes XS - 2L INT



DYLAN  
Navy  
Sizes XS - 2L INT



STRETCH RIB  
Black - Long sleeve  
Sizes XS - 2L INT



SNAP VEST  
White  
Sizes XS - 2L INT



CAMO BIKE  
Green  
Sizes XS - 3L INT



TRIUMPH LOVES TO ROCK  
Grey Marl  
Sizes XS - 3L INT

# LADIES CASUAL

## T shirts and vests



**CYCLEDELIC**  
Black  
Sizes XS - 3L INT



**MOTORCYCLE CLUB**  
Red  
Sizes XS - 2L INT



**STAR PRINT**  
Lilac  
Sizes XS - 2L INT



**GLOBAL**  
Ecru/blue  
Sizes XS - 2L INT



**RETRO CIRCLE**  
Ecru  
Sizes XS - 2L INT



**BONNEVILLE GUITARS**  
Plum  
Sizes XS - 3L INT



**CAMO LOGO**  
Black - Long sleeve  
Sizes XS - 3L INT



**REVERSE STUD**  
Grey  
Sizes XS - 2L INT



**TRIM VEST**  
Black  
Sizes XS - 2L INT

JIGSAW  
Red

Years 3 - 8 INT



# CHILDREN



HOODIE #2  
Navy

Years 3 - 11 INT



STITCHED BIKE  
Green

Years 3 - 11 INT



HOODIE #1  
Navy

Years 3 - 11 INT

BONNIE BIKE  
Ecru

Years 3 - 11 INT



NINE BIKES  
Black

Years 3 - 11 INT



STRIPED LOGO  
Grey

Years 3 - 11 INT

# PERSONAL ACCESSORIES



SPORTS CLASSIC II  
42mm stainless steel case  
Brown leather strap  
10 ATM

M9413608



ANALOGUE DIGITAL  
42mm stainless steel case  
Black leather strap  
5 ATM

M9413808



LADIES STAINLESS STEEL WITH DIAMONDS  
8 full cut diamonds pieces on bezel  
Black leather strap  
5 ATM

M9413708



CARBON CHRONO 4  
38mm stainless steel case  
Stainless steel strap  
Carbon Fibre Face  
5 ATM

M9413508



BEANIE ECRU  
M8801308



BLACK BEANIE  
M8801408



RIDER 02 CAP  
M9392608



BLACK LOGO CAP  
M9392808



UNION JACK WING CAP  
M9392405

BELT #2  
Black with silver rivets

Size 1 M9291408 31 - 38 inches

Size 2 M9291508 34 - 41 inches



BRASS TANK BUCKLE  
M9280506



BELT #1  
Brown with multi colour rivets

Size 1 M9291208 31 - 38 inches

Size 2 M9291308 34 - 41 inches



CHEQUER BELT BUCKLE  
M9282608



UNION SHIELD BUCKLE  
M9281505

JEANS BELT

Extra small M9290405

Small M9290505

Medium M9290605

Large M9290705

Extra large M9290805





TRIUMPH LOGO BLACK MUG  
M2182606



EST 1902 MUG  
M2183008



MOD CRUSHERS CLUB MUG  
M2183108



CARBON BALL POINT #2  
M8000306



LIGHTER #14  
M9440007-CH

LIGHTER #12  
M9440006-FH

LIGHTER #13  
M9440006-WP



CLASSIC WALLET  
M9382108



RIVET WALLET  
M9382008



CARD HOLDER  
M9382208



BEACH TOWEL  
180cm x 102cm  
M9360006



CHEQUER KEY FOB  
M9480008

TRIANGULAR KEY FOB  
M9460095

RUBBER KEY FOB #2  
M9471005



PATCHES

1. ROUND STRIPE  
M9481705

2. HALF UNION  
M9481805

3. WHITE WING  
M9481905

4. BLUE WING  
M9482005

5. UNION FLAG WING  
M9482105

6. SIXTY8  
M9482306

7. CHEQUER  
M9482607

8. RIDERS  
M9482406

9. WORLDS FASTEST  
M9482708

10. WORLD  
M9482206

11. RECTANGLE  
M9480095



GB MOUSEMAT  
M9120108

MONEY BOX - CERAMIC

M2181105



BUFFS

1. SPORTS BUFF #5

M9431808

2. POLAR BUFF #4

M9431908

3. CLASSIC BUFF #5

M9432008

4. CRUISER BUFF #3

M9432108

Micro fibre neck tubes

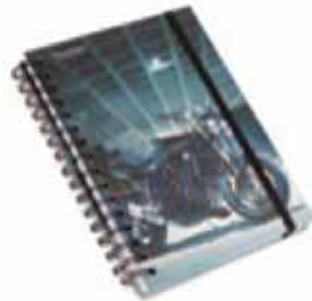
BOTTLE OPENER #2

M9501306



A5 NOTEBOOK SPEED TRIPLE

M9504007



A5 NOTEBOOK BONNIE

M9503006

UNION FLAG CHAIR

M9422006



COLLECTORS LIMITED EDITION ROCKET III  
Scale 1:12<sup>th</sup> die cast scale model

Black M2002104 - BLK

Grey M2002104 - GRT



DAYTONA 675  
Scale 1:18<sup>th</sup> scale model

M2002408



Variety of other models available

FACTORY STICKER SET #5

M9110208



KIT BAG  
40 Litre capacity  
Key lock included

M9343105



**COURIER PC BAG**

- Ballistic Nylon Tough fabric
- Cushioned pillow tech section
- Key ring clip
- Open mesh pocket
- Phone pocket
- Retractable i.d. tag
- Waist band restraint

M9343206



**HELMET RUCKSACK**

- 16/20 Litre extendable capacity
- Helmet carrying compartment
- Multi pocket design
- Key lock included

M9343005



# SIZE CHART

## MENS SIZE CHART

**SHOE SIZES:**

UK	Euro	US
6 1/2	40	7 1/2
7	41	8
8	42	9
9	43	10
9 1/2	44	10 1/2
10	45	11
11	46	12

**JACKET SIZES:**

UK	Euro	US	INT	Chest cm/in	Waist cm/in
34	44	34	XS	79-84/31-33	69-74/27-29
36	46	36	XS	84-89/33-35	74-79/29-31
38	48	38	S	89-94/35-37	79-84/31-33
40	50	40	S	94-99/37-39	84-89/33-35
42	52	42	M	99-104/39-41	89-94/35-37
44	54	44	M	104-109/41-43	94-99/37-39
46	56	46	L	109-114/43-45	99-104/39-41
48	58	48	L	114-119/45-47	104-109/41-43
50	60	50	XL	119-124/47-49	109-114/43-45
52	62	52	XL	124-129/49-51	114-119/45-47
54	64	54	XXL	129-134/51-53	119-124/47-49
56	66	56	XXL	134-139/53-55	124-129/49-51

**JEANS SIZES:**

UK	Euro	US	INT	Waist cm/in	Hips cm/in	Inseam cm/in
30	40	30	XS	74-79/29-31	96-100/38-39	86/34
32	42	32	S	79-84/31-33	100-104/39-41	87/34
34	44	34	M	84-89/33-35	104-108/41-42	88/35
36	46	36	L	89-94/35-37	108-112/42-44	89/35
38	48	38	XL	94-99/37-39	112-116/44-45	90/35
40	50	40	XXL	99-104/39-41	116-120/45-47	91/36
42	52	42	XXXL	104-109/41-43	120-124/47-48	92/36

## LADIES SIZE CHART

**SHOE SIZES:**

UK	Euro	US
4	37	5 1/2
5	38	6 1/2
6	39	7

**JACKET SIZES:**

UK	Euro	US	INT	Chest cm/in	Waist cm/in
10	38	8	XS	85-90/33-35	65-70/25-27
12	40	10	S	90-95/35-37	70-75/27-29
14	42	12	M	95-100/37-39	75-80/29-31
16	44	14	L	100-105/39-41	80-85/31-33
18	46	16	2L	105-110/41-43	85-90/33-35
20	48	18	3L	113-118/43-45	92-98/36-39

**JEANS SIZES:**

UK	Euro	US	INT	Waist cm/in	Hips cm/in	Inseam cm/in
10	38	8	XS	65-70/25-27	95-100/37-39	75-80/29
12	40	10	S	70-75/27-29	100-105/39-41	76-81.5/30
14	42	12	M	75-80/29-31	105-110/41-43	77-83/31
16	44	14	L	80-85/31-33	110-115/43-45	78-84.5/32
18	46	16	2L	85-90/33-35	115-120/45-47	79-86/33
20	48	18	3L	94-99/37-39	122-127/48-50	86-90/34

## CHILDRENS SIZE CHART

Age	Height	Weight	Chest
3-4 years	104cm	12kg-15kg	78cm
	40in	28lb's-34lb's	30in
5-6 years	116cm	15kg-18kg	82cm
	45in	34lb's-40lb's	32in
7-8 years	128cm	18kg-21kg	86cm
	50in	40lb's-46lb's	34in
9-11 years	140cm	21kg-24kg	90cm
	55in	46lb's-55lb's	36in

### NON-ILLUSTRATED PRODUCTS

- Protectors**
- L&K Protector Set (2pc) M2250001
  - Dual Density Back Insert M2250101
  - Knox Protector Set (2pc) M2250203

**Fleece Neck Warmer M2030000**

**Hangers**

- Coat Hanger M8890002
- Trouser Hanger M8890108
- Shirt Hanger M8890203

**P.O.S. Display**

- Buff Totem M9410508
- Watch Display Unit M9412405

**Mens Integra W/Proof Cover**

- 38 M3523805
- 40 M3524005
- 42 M3524205
- 44 M3524405
- 46 M3524605
- 48 M3524805
- 50 M3525005
- 52 M3525205
- 54 M3525405
- 56 M3525605

**Ladies Integra W/Proof Cover**

- XS M3520005
- S M3520105
- M M3520205
- L M3520305
- 2L M3520405
- 3L M3520505

Size chart is only a guide. Sizes of some products may vary due to style and cut of garments. Please visit your Triumph dealer.

The Triumph logo is displayed in white, bold, sans-serif capital letters against a dark blue background with a subtle gradient and a thin white swoosh underneath the letters.

At Triumph we want every ride to be safe and enjoyable. Be sure to ride safely, defensively and within the limits of the law, the road conditions and your abilities. Take a riding skills course. Always wear an approved helmet, eye protection and appropriate clothing and always insist that any passenger does the same. Never ride while under the influence of alcohol or drugs. Study your owner's manual and always inspect your Triumph before riding.

All details correct at time of going to press.

Triumph Motorcycles Limited reserve the right to make changes without prior notice.

Please consult your dealer for product and colour availability.

© 2007 Triumph Motorcycles Limited.  
All rights reserved.  
Triumph Motorcycles Limited,  
Normandy Way, Hinckley LE10 3BZ  
England

T3864785

To find your local Triumph dealer visit  
[www.triumphmotorcycles.com](http://www.triumphmotorcycles.com)

Your local dealer: