

07

CLOTHING



Fashion's
fastest catwalk



Leatherwear

6



Outerwear

14



Boots & Gloves

22



GO
YOUR
OWN
WAY



Corporatewear

24



Personal

Accessories

30



Triumph.
The alternative
designer label



Little known fact: Triumph design their own motorcycle clothing. We don't badge other people's stuff with Triumph logos – we couldn't sleep at night. Only by controlling the design and spec ourselves – just like we do with our bikes – can we be sure to get the performance that modern motorcycle clothing must have. And anyway, who wants to wear the same thing as everybody else? This way you get clothing that's as individual and stylish as your bike. Same rules apply to our casual stuff. T-shirts and sweats may not have to perform like motorcycle clothing, but they still have to look good.

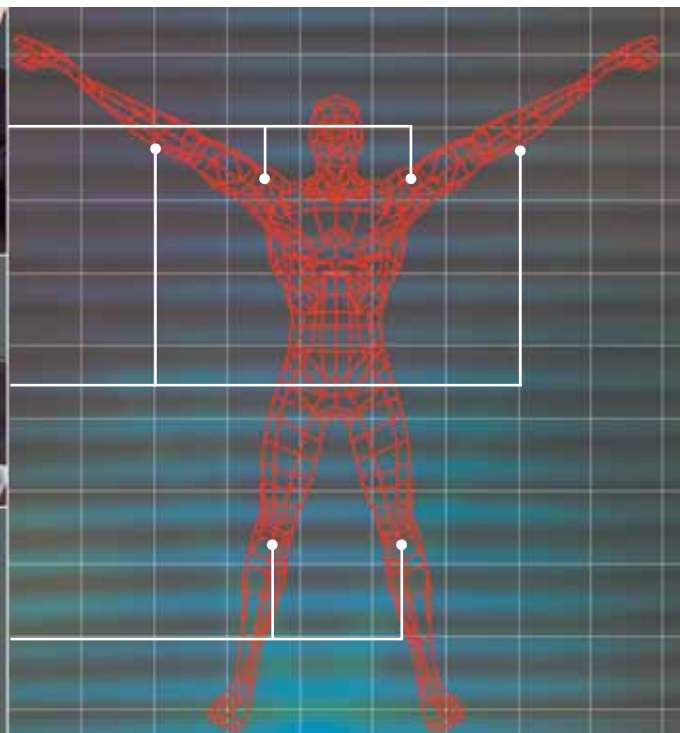
Jackets are tailored to be just as comfortable when you're riding as when you're not. To that end, we create different designs for different bikes in the range. So a jacket cut for a more radical riding position like that of a Daytona 675 will be different to a jacket designed for a more relaxed bike like a Bonneville.



Triumph's leatherwear is made from full grain leather. This comes at a premium because the hides have to be free from any potential weak spots – like those created by a brush with a barbed wire fence for instance.

Impact seams are double or triple-stitched. That way, if the exposed stitching is abraded, the deeper, hidden stitching is there as a second line of defence to save the integrity of the garment – and your skin. Similarly, we use double leather panels in vulnerable areas like elbows and seats to give better resistance to abrasion.

Technical performance and hard Knox



Protective armour in our leather and textile clothing comfortably exceeds the latest safety standards. Well, it would do – it's supplied by Knox, world leaders in impact protection for motorcyclists – including MotoGP and Superbike riders. Despite being flexible and ultra light, the Knox Air CE approved protectors we've chosen perform brilliantly. Their immensely hard outer shell is injected to form a hexagonal inner crumple zone. The additional EVA rubber lining absorbs even more energy.



Genetix Jacket Urban Sports

1.2mm leather
 Easily removable CE95 protectors – shoulder and elbow
 Double and triple stitched impact seams
 Dual density back insert
 Removable aluminium windproof liner
 Removable fleece neck warmer
 3M® night reflective piping – front and rear
 Hidden ventilation panels
 Waist connection zipper supplied



Hawk Jacket Urban Sports

1.2mm leather
 Easily removable CE95 protectors – shoulder and elbow
 Double stitched impact seams
 Dual density back insert
 3M® night reflective piping – front and rear
 Option to fit fleece neck warmer
 Waist connection zipper supplied

Rivton Jacket Modern Classics

1.2mm leather
 Easily removable CE95 protectors – shoulder and elbow
 Double stitched impact seams
 3M® night reflective piping – front and rear
 Option to fit fleece neck warmer
 Waist connection zipper supplied



1.



2.

Leatherwear

Modern Classics
 Fashion
 Jeans

Mens

1. Romero Jacket Modern Classics
 1.2mm leather
 Easily removable CE95 protectors – shoulder and elbow
 Double stitched impact seams
 Large leather back logo
 Option to fit fleece neck warmer
 Waist connection zipper supplied

2. Retro Jacket Modern Classics
 1.2mm leather
 Easily removable CE95 protectors – shoulder and elbow
 Double stitched impact seams
 Large leather back logo
 Option to fit fleece neck warmer
 Waist connection zipper supplied



Monclar Jacket Fashion
Nubuck leather
Multi-colour zippers



Madison Jacket Fashion
Antiqued leather
Printed distressed back logo
Pockets for protectors



Classic Jeans II
1.2mm leather
Removable CE95 protectors – knee
Double leather panels – knee and seat
Cordura® stretch panels
Double stitched impact seams
Hip padding
Waist connection zipper supplied

Rocket III Jacket

- 1.2mm leather
- Easily removable CE95 protectors – shoulder and elbow
- Double stitched impact seams
- Removable aluminium windproof liner
- Hidden ventilation panels
- Large patch back logo
- Option to fit a fleece neck warmer
- Waist connection zipper supplied



Leatherwear

Cruisers

Mens



Westbourne Jacket

1.2mm leather
 Easily removable CE95 protectors – shoulder and elbow
 Double stitched impact seams
 Removable aluminium windproof liner
 3M[®] night reflective piping – front and rear
 Hidden ventilation panels
 Large embossed back logo
 Waist connection zipper supplied



Dean Jacket

1.2-1.4 mm Soft leather
 Removable aluminium vest liner
 Antiqued brass snaps and zippers



Samford Jacket

1mm leather
 Easily removable CE95 protectors – shoulder and elbow
 Double leather stitched impact seams
 Hidden ventilation panels
 Large embossed back logo
 Option to fit fleece neck warmer
 Waist connection zipper supplied



Raven Jacket Urban Sports

1.2mm leather
Easily removable CE95 protectors – shoulder and elbow
Double stitched impact seams
Dual density back insert
3M® night reflective piping – front and rear

Large leather back logo
Option to fit fleece neck warmer
Waist connection zipper supplied



Ember Jacket Modern Classics

1.2mm leather
Easily removable CE95 protectors – shoulder and elbow
Double stitched impact seams
Stitched detailed logo
Option to fit fleece neck warmer
Waist connection zipper supplied

Leatherwear

Urban Sports
Modern Classics
Cruisers

Ladies



Melina Jacket Modern Classics

1mm leather
 Easily removable CE95 protectors – shoulder and elbow
 Double stitched impact seams
 Stitch detailed back logo
 Option to fit fleece neck warmer
 Waist connection zipper supplied



Compton Jacket Cruisers

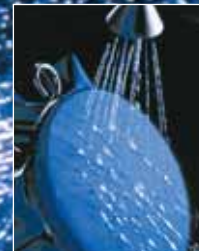
1mm leather
 Easily removable CE95 protectors – shoulder and elbow
 Double stitched impact seams
 Hidden ventilation panels
 Option to fit fleece neck warmer
 Waist connection zipper supplied



Roxy Jacket Cruisers

1mm leather
 Easily removable CE95 protectors – shoulder and elbow
 Double stitched impact seams
 Printed distressed back logo
 Option to fit fleece neck warmer
 Waist connection zipper supplied

OUTERWEAR



Take our jackets for
a dry run



You can ride a bike in pretty much any kind of weather provided you're dry. That's why we use Sympatex® in our clothing. Sympatex® is a clever, polyester-based membrane that allows vapour to escape (so you don't get damp) but keeps wet weather out. It doesn't rely on tiny holes to work, so unlike some technical membranes it won't gradually block with dirt and become less effective over time. Sympatex® is a German company with 25 years' experience of making waterproof products and whilst they use their ingenuity trying to make our products leak under lab conditions, we do our torture tests with Triumph test riders on real roads. Result? Clothing that could keep blotting paper dry in a monsoon.



Outerwear

Urban Sports

Mens



Sympatex® Pantha Jacket Urban Sports

Waterproof, breathable and windproof
 Hiten® nylon water repellent outer fabric*
 Waist connection zipper supplied
 Removable CE95 protectors – shoulder and elbow
 Removable dual density back insert

Printed back logo
 Sleeve width adjusters
 3M® night reflective tape
 Option to fit fleece neck warmer
 Air Flow Tech – ventilation air flow panels; front, arm and back

*Hiten® is a highly abrasive material with a twisted yarn



Tornado II Jacket Urban Sports
 Waterproof, breathable and windproof
 Hiten® nylon water repellent outer fabric*
 Removable CE95 protectors – shoulder and elbow
 Removable dual density back insert
 Sleeve width adjusters
 3M® night reflective tape
 Option to fit fleece neck warmer
 Waist connection zipper supplied



Integra Jacket Urban Sports

Fully perforated panels and Cordura® construction
 Integrated waterproof cover
 Removable CE95 protectors – shoulder and elbow
 Removable dual density back insert
 Sleeve width adjusters
 3M® night reflective tape
 Waist connection zipper supplied





Denim Jacket Modern Classics
 Ring-spun washed denim outer fabric
 Keprotec® reinforced panels - shoulder and elbow



Retro Paddock Jacket Modern Classics
 Cordura® water repellent outer fabric
 Removable quilted liner
 Removable CE95 protectors – shoulder and elbow
 Hidden ventilation panels
 Large leather back logo
 Option to fit fleece neck warmer
 Waist connection zipper supplied

Outerwear

Modern Classics
 Fashion

Mens



Rochester Mesh Jacket Modern Classics
 Fully perforated panels and Cordura® construction
 Removable CE95 protectors – shoulder and elbow
 Large leather back logo
 Waist connection zipper supplied



Connaught Jacket Modern Classics
 Oxford nylon water repellent outer fabric
 Removable CE95 protectors – shoulder and elbow
 Large leather back logo
 Option to fit fleece neck warmer
 Waist connection zipper supplied



Garrick Jacket Fashion
 Water repellent outer fabric
 Stitch detailed back logo
 Pockets for protectors – shoulder and elbow



College Jacket

Melton Body
Large leather back logo



Team Blouson

Water repellent outer fabric
Large embroidered back logo

Outerwear

Team
Jeans
Function

Mens



Western Jeans

Waterproof, breathable and windproof
Cordura® water repellent outer fabric
Easily removable CE95 protectors – knee
Adjustable knee protector pockets – allow
varying leg lengths
Double stitched impact seams
Reinforced knee and seat areas
Boot cut

Raptor Vented Jeans

Cordura® construction
Fully perforated mesh panels - thigh, shin and calf
Easily removable CE95 protectors - knee
Waist connection zipper supplied

Denim Jeans

Ring-spun washed denim outer fabric
Keprotec® reinforced panels – knee and seat
Variety of leg lengths available
Boot cut



Chevron 2 piece Suit

Waterproof nylon fabric
2 large storage pockets on jacket
3M® night reflective chevron shoulder design
Ankle to knee length zippers
Jacket and pants available separately



Chevron Oversuit

Waterproof nylon fabric
Step in – step out design
2 full length zippers
3M® night reflective chevron shoulder design
3M® night reflective slash back stripe
Bumbag for storage



Raptor Waterproof Pullover

Waterproof and windproof
Ripstop outer fabric
3M® night reflective panel
Sleeve with adjusters
Neck adjuster
Also available in ladies sizes
Triumph logo on back



Integra Jacket Urban Sports

Fully perforated panels and Cordura® construction
Integrated waterproof cover
Removable CE95 protectors – shoulder and elbow
Removable dual density back insert
Sleeve width adjusters
3M® night reflective tape
Waist connection zipper supplied



Sympatex® Seeta Jacket Urban Sports

Waterproof, breathable and windproof
Hitena® nylon water repellent outer fabric*
Removable CE95 protectors – shoulder and elbow
Removable dual density back insert
Printed back logo

Sleeve width adjusters
3M® night reflective tape
Option to fit fleece neck warmer
Waist connection zipper supplied
Air Flow Tech - ventilation air flow panels: front, arms and back

*Hitena® is a highly abrasive material with a twisted yarn

Outerwear

Urban Sports
Jeans
Modern Classics

Ladies



Western Jeans

Waterproof, breathable and windproof
Cordura® water repellent outer fabric
Easily removable CE95 protectors – knee
Adjustable knee protector pockets –
allow varying leg lengths
Double stitched impact seams
Reinforced knee and seat areas
Boot cut

Raptor Vented Jeans

Cordura® construction
Fully perforated mesh panels -
thigh, shin and calf
Easily removable CE95 protectors - knee
Waist connection zipper supplied

Denim Jeans

Ring-spun washed denim outer fabric
Keprotec® reinforced panels – knee and seat
Boot cut



Denim Jacket Modern Classic
Ring-spun washed denim outer fabric
Keprotec® reinforced panels – shoulder and elbow



Donna Jacket Modern Classic
Oxford nylon water repellent outer fabric
Removable CE95 protectors – shoulder and elbow
Large leather back logo
Waist connection zipper supplied



Sympatex® Expedition II Boot

Waterproof, breathable and windproof
Full leather construction
Gear change protector
Ankle, heel and shin guards
Logos embossed
3M® night reflective panel
Non slip rubber sole
Toe slider



Team Boot

Ballistic nylon and leather construction
Non slip rubber sole

Sympatex® Explorer II Boot

Waterproof, breathable and windproof
Leather and nubuck construction
Gear change protector
Ankle and heel guards
Velcro fastening
3M® night reflective panel
Non slip rubber sole
Available in ladies sizes



Sympatex® Tritech II Boot

Waterproof, breathable and windproof
Leather construction
Ankle guards
3M® night reflective panel
Non slip rubber sole
Available in ladies sizes



Highway Boot

Full leather construction
Antiqued Adjusters
Logos embossed
Non slip rubber sole
Available in ladies sizes

Boots & Gloves

1. Highway Glove

All leather construction
Double leather palm section
Keprotec® abrasion panels
Double leather impact panels
Ventilated finger panels
Available in ladies sizes

2. Perforated Highway Glove

Perforated version of the Highway Glove
Available in ladies sizes

3. Raptor Vented Gloves

Perforated mesh fabric and leather construction
Ventilated hard knuckle panels
Slimline sports cuff with adjuster
Keprotec® abrasion panels
Available in ladies sizes



Sympatex® Socks

Windproof and breathable
Lightweight durable construction
Added support features
High insulation capabilities
Quick drying
Moisture transportation system
Micro fibre properties for continuous freshness

Size	
37/38	M9350003
39/40	M9350103
41/42	M9350203
43/44	M9350303
45/46	M9350403

4. Sympatex® All Leather II Glove

Waterproof, breathable and windproof
All leather construction
Keprotec® abrasion panels
Raised wrist padding
3M® night reflective piping
Thinsulate lining
Visor wipe



5. Roadster Glove

Hitena® and leather construction*
Ventilated hard knuckle panels
Keprotec® abrasion panels
Non slip palm panels
3M® night reflective piping
Raised wrist padding
Double strap wrist fastening

*Hitena® is a highly abrasive material with a twisted yarn

6. Sympatex® Expedition Glove

Waterproof, breathable and windproof
Hitena® and leather construction*
Hard knuckle panels
Keprotec® abrasion panels
Raised wrist padding
3M® night reflective piping
Thinsulate lining
Visor wipe



7. Hard Carbon Glove

Full knuckle carbon weave panel
Keprotec® abrasion panels
Double leather impact panels
Raised wrist padding
3M® night reflective piping
Ventilated finger sections
Available in ladies sizes

CORPORATEWEAR



Riders Zip Thru
Navy/Red/Ecru



Team Shirt #2
Navy
Straight cut fit



Pullover Hoodie
Black



Yellow Zip Thru
Yellow/Black



Fashion Shirts
Black

Team

Riders Association of Triumph

The technical department

Specially developed with Triumph's own riders in mind, this is a range of clothing for wearing off bike or under your motorcycle kit. The range includes clothing with a high level of technical performance to give you maximum comfort in all riding conditions: Tri-Thermo to keep you warm without the need for bulky layers; Tri-Dri to wick moisture away from the body. Thinking of crossing the Gobi on a sunny day? No sweat.



RAT T shirt
Navy
White



RAT Stripe Polo
Grey/Black



RAT Tri-Thermo Fleece
Black



RAT Tri-Dri Polo
Black/Grey



Global Ecru/blue Retro Circle Dark Grey Flying Bike Orange Go Modern Grey Sixty8 Red
Deco Burgundy Scotland Yard Taupe Dylan T-shirt White Dylan T-shirt Navy

Triumph's range of vintage sixty8 T-shirts are inspired by classic images from our archive of vintage tees, period ads and posters. With a modern re-mix, these T-shirts are the authentic alternative.

Cool off

Corporatewear

Mens



Rocket III # 5

Black

Daytona Triple

Navy

Scrambler

Red



Felt Logo

Grey

Motorcycle Club

Light Blue

Riders

White

Punk

Black

Japan

Red

2 in 1 Tee

Black



Stripe Polo Short

Sleeve

White

Spray Logo

Navy

Reverse Spray

Logo

Black

Fabulous Hinckley

Black (rear)

Fabulous Hinckley

Black (front)



Snap Vest
White



Stretch Rib
Black



Star Print
Lilac



Motorcycle Club Vest
Brown



Fashion Shirt
Black



Trim Vest
Black



Velour Zip Thru
Plum



Team Shirt # 1
White

Corporatewear

Sweatshirts
Team
Fashion Shirts
Casualwear

Ladies



Japan
Red
Reverse Spray
Black
Motorcycle Club
Red
Reverse Stud
Grey



Slit Neck
Plum/Ecru
Foil Logo
Light Blue
Spray Logo
Navy
Every Girl
Blue



Retro Circle
Ecru
Dylan T-shirt
Navy
Dylan T-shirt
White
Global
Ecru/blue





Personal Accessories

Watches
Belts & Buckles
Headgear

Ladies Diamond Chrono

M9413206
36mm stainless steel case
8 diamonds on bezel
Stainless steel strap
10 ATM

Sport Classic Watch

M9413006
42mm stainless steel case
Black leather strap
10 ATM

Carbon Chrono III

M9413106
43mm stainless steel case
Carbon fibre face
10 ATM



Rivet Belt Mens
Small/Medium
M9291005
Large/X-Large
M9291105

Triumph Brass Tank Buckle
M9280506

Rivet Belt Ladies
X-small/Medium
M9292005
Large/3-L
M9292105

Buckles:
Half Union Flag Buckle M9281305
Round Stripe Buckle M9281205
Union Shield Buckle M9281505
Ladies Sparkle Buckle M9282405

Jeans Belt:
Extra Small M9290405
Small M9290505
Medium M9290605
Large M9290705
Extra Large M9290805

1. Union Flag Wing Cap M9392405
2. Sport #1 Cap M9392305
3. Navy Beanie #2 M8801206



Personal Accessories



Courier PC Bag

Tough Ballistic nylon fabric
Cushioned pillow tech section
Key ring clip
Open mesh pocket
Phone pocket
Retractable I.D. tag
Riding waist band restraint
Suitcase strap
Removable mesh cable case
M9343206

Helmet Rucksack

16/20 Litre extendable capacity
Helmet carrying compartment
Multi pocket design
Key lock included
M9343005



Beach Towel

M9360006
180cm x 102cm



Bufs

micro fibre neck tubes

1. Sports Buff #3

M9431005

2. Polar Buff #2

M9431305

3. Classic Buff #3

M9431105

4. Cruiser Buff

M9431205

5. Sports Buff #4

M9431406

6. Polar Buff #3

M9431506

7. Classic Buff #4

M9431606

8. Cruiser Buff #2

M9431706

Sticker Sets:

Window Decal set #2

M9111005

Factory Sticker set #3

M9110005

Factory Sticker set #4

M9110105

Patches:

Rectangle

M9480095

Round stripe

M9481705

Half Union

M9481805

White Wing

M9481905

Blue Wing

M9482005

Union Flag wing

M9482105

World

M9482206

Sixty8

M9482306

Riders

M9482406

Union Jack

M9480398



Wall Clock #2 M9401005
300mm Diameter Battery Powered



Hip Flask M9502005
Leather Bound



Carbon Ballpoint #2
M8000306



Coasters M9501104
Stainless steel set of 4



Leather CD Holder
M9381305



Kit Bag M9343105
40 Litre capacity. Key Lock included



Money Box M2181105
Ceramic



Stainless steel Mug 300ml
M9420104



Riders Mouse Mat #3
M9120106



Wallets:
Leather Wallet with Chain M9381205
Leather Card Wallet M9381105
Leather Wallet M9381005



Ashtray #2 M2181005



A5 Notebook M9503006



Bottle Opener #2 M9501306



Belt and buckle set M9500403



2.



1.

Childrens Clothing
1. Nine Bikes
2. Colourful Bike Hoodie



Key Fobs:
Triangular M9460095
Rubber #2 M9471005
Oval M9460000



Lighter #11 M9440005-BF
Lighter #12 M9440006-FH
Lighter #13 M9440006-WP



Collectors Limited Edition
Bonneville T120 1959
1:12th die cast scale model
M2001204



Collectors Limited Edition
Rocket III
1:12th die cast scale model
Black M2002104-BLK
Red M2002104-RED
Grey M2002104-GRT



Triumph by Paul Smith
Multi Union Bonneville
1:18th die cast scale model
M2002205
Rocket III
1:18th die cast scale model
M2002306
Variety of models available



Fabulous Hinckley Mug
M2182806
Logo Black Mug
M2182606
Flying Bike Mug
M2182706

Mens Size Chart

Shoe Sizes:

UK	Euro	US
6 ¹ / ₂	40	7 ¹ / ₂
7	41	8
8	42	9
9	43	10
9 ¹ / ₂	44	10 ¹ / ₂
10	45	11
11	46	12

Jacket Sizes:

UK	Euro	US	INT	Chest cm/in	Waist cm/in
34	44	34	XS	79-84/31-33	69-74/27-29
36	46	36	XS	84-89/33-35	74-79/29-31
38	48	38	S	89-94/35-37	79-84/31-33
40	50	40	S	94-99/37-39	84-89/33-35
42	52	42	M	99-104/39-41	89-94/35-37
44	54	44	M	104-109/41-43	94-99/37-39
46	56	46	L	109-114/43-45	99-104/39-41
48	58	48	L	114-119/45-47	104-109/41-43
50	60	50	XL	119-124/47-49	109-114/43-45
52	62	52	XL	124-129/49-51	114-119/45-47
54	64	54	XXL	129-134/51-53	119-124/47-49
56	66	56	XXL	134-139/53-55	124-129/49-51

Jeans Sizes:

UK	Euro	US	INT	Waist cm/in	Hips cm/in	Inseam cm/in
30	40	30	XS	74-79/29-31	96-100/38-39	86/34
32	42	32	S	79-84/31-33	100-104/39-41	87/34
34	44	34	M	84-89/33-35	104-108/41-42	88/35
36	46	36	L	89-94/35-37	108-112/42-44	89/35
38	48	38	XL	94-99/37-39	112-116/44-45	90/35
40	50	40	XXL	99-104/39-41	116-120/45-47	91/36
42	52	42	XXXL	104-109/41-43	120-124/47-48	92/36

Ladies Size Chart

Shoe Sizes:

UK	Euro	US
4	37	5 ¹ / ₂
5	38	6 ¹ / ₂
6	39	7

Jacket Sizes:

UK	Euro	US	INT	Chest cm/in	Waist cm/in
10	38	8	XS	85-90/33-35	65-70/25-27
12	40	10	S	90-95/35-37	70-75/27-29
14	42	12	M	95-100/37-39	75-80/29-31
16	44	14	L	100-105/39-41	80-85/31-33
18	46	16	2L	105-110/41-43	85-90/33-35

Jeans Sizes:

UK	Euro	US	INT	Waist cm/in	Hips cm/in	Inseam cm/in
10	38	8	XS	65-70/25-27	95-100/37-39	75-80/29
12	40	10	S	70-75/27-29	100-105/39-41	76-81.5/30
14	42	12	M	75-80/29-31	105-110/41-43	77-83/31
16	44	14	L	80-85/31-33	110-115/43-45	78-84.5/32
18	46	16	2L	85-90/33-35	115-120/45-47	79-86/33

Size chart is only a guide. Sizes of some products may vary due to style and cut of garments. Please visit your Triumph dealer.

Size Chart

Non-Illustrated Products

Protectors

- L&K Protector Set (2pc) M2250001
- Dual Density Back Insert M2250101
- Knox Protector Set (2pc) M2250203

Fleece Neck Warmer M2030000

Hangers

- Coat Hanger M8890002
- Trouser Hanger M8890102
- Shirt Hanger M8890203

P.O.S. Display

- Buff Totem M9410503
- Watch Display Unit M9412405

Mens Integra W/Proof Cover

- 38 M3523805
- 40 M3524005
- 42 M3524205
- 44 M3524405
- 46 M3524605
- 48 M3524805
- 50 M3525005
- 52 M3525205
- 54 M3525405
- 56 M3525605

Ladies Integra W/Proof Cover

- XS M3520005
- S M3520105
- M M3520205
- L M3520305
- 2L M3520405
- 3L M3520505

A woman with long brown hair is shown in profile, looking out of a window. She is wearing a dark tank top with the word 'TRIUMPH' visible on it. The background is a blurred view of trees and a building.

GO YOUR OWN WAY

At Triumph we want every ride to be safe and enjoyable. Be sure to ride safely, defensively and within the limits of the law, the road conditions and your abilities. Take a riding skills course. Always wear an approved helmet, eye protection and appropriate clothing and always insist that any passenger does the same. Never ride while under the influence of alcohol or drugs. Study your owner's manual and always inspect your Triumph before riding.

All details correct at time of going to press.

Triumph Motorcycles Limited reserve the right to make changes without prior notice.

Please consult your dealer for product and colour availability. Triumph International holds the rights in the word Triumph in classes 10 and 23 to 26.

© 2006 Triumph Motorcycles Limited.
All rights reserved.
Triumph Motorcycles Limited,
Normandy Way, Hinckley LE10 3BZ
England

www.triumphmotorcycles.com

None of the products featured in this brochure are sold as safety garments.

T3864785

AUSTRALIA
Triumph Australia
Tel: 61 3 9381 9766
Fax: 61 3 9381 9798

AUSTRIA
Triumph Motorrad
Deutschland GmbH
Tel: 49 6175 933610
Fax: 49 6175 933627

BENELUX
Triumph Motorcycles BV
Tel: 31 725 410311
Fax: 31 725 410312

BRAZIL
Gruppo Izzo
Tel: 55 11 3081 7873
Fax: 55 11 3081 7873

CANADA
Triumph Motorcycles
(America) Ltd
Tel: 1 678 854 2010
Fax: 1 678 854 2025

DENMARK
Triumph Motorcycles AB
Tel: 46 868 00725
Fax: 46 868 00785

EIRE
Triumph Motorcycles Limited
Tel: 44 1455 251700
Fax: 44 1455 453104

FINLAND
Triumph Motorcycles AB
Tel: 46 868 00725
Fax: 46 868 00785

FRANCE
Triumph S.A.S
Tel: 33 1 64 62 38 38
Fax: 33 1 64 80 58 28

GERMANY
Triumph Motorrad
Deutschland GmbH
Tel: 49 6175 933610
Fax: 49 6175 933627

GREECE
Elioofil S.A.
Tel: 30 210 28 49 200
Fax: 30 210 28 42 226

GUATEMALA
Comeca
Tel: 502 2420 8989
Fax: 502 2334 7453

HONG KONG
MF Jebsen Automotive Ltd
Tel: 852 2366 2017
Fax: 852 2191 9117

HUNGARY
Frontosa Motor Ltd
Tel: 36 1 270 0755
Fax: 36 1 270 0785

ITALY
Triumph Motorcycles SRL
Tel: 39 02 934 5451
Fax: 39 02 935 82575

JAPAN
Triumph Japan KK
Tel: 81 3 3261 1701
Fax: 81 3 3261 1725

**KUWAIT/SAUDI
ARABIA/BAHRAIN**
Desert Star Trading Co
Tel: 965 484 9830
Fax: 965 484 0078

MALTA
Cycle World Ltd
Tel: 356 2147 0053
Fax: 356 2147 0051

MEXICO
Triumph Mexico
Tel: 52 81 1001 8900
Fax: 52 81 1001 8942

NEW ZEALAND
Triumph Motorcycles (NZ) Ltd
Tel: 64 9 270 0904
Fax: 64 9 270 0680

NORWAY
Triumph Motorcycles AB
Tel: 46 868 00725
Fax: 46 868 00785

POLAND
Inter Motors S.A.
Tel: 0801 88 20 88
Fax: 22 714 1918

PORTUGAL
Cimpomovel Dealer, SA
Tel: 351 21 845 5300
Fax: 351 21 845 5301

PUERTO RICO
Bella Retail Group
Tel: 787 620 6970
Fax: 787 620 6990

SINGAPORE
Cyclenet Pte Ltd
Tel: 65 6295 6393
Fax: 65 6295 0748

SLOVENIA
Triumph Motorrad
Deutschland GmbH
Tel: 49 6175 933610
Fax: 49 6175 933627

SOUTH AFRICA
Triumph South Africa
Tel: 27 11 448 1112
Fax: 27 11 448 2340

SPAIN
Proeuropa Motor SL
Tel: 34 902 255 275
Fax: 34 902 433 675

SWEDEN
Triumph Motorcycles AB
Tel: 46 868 00725
Fax: 46 868 00785

SWITZERLAND
Triumph S.A.S.
Tel: 33 1 64 62 38 38
Fax: 33 1 64 80 58 28

TAIWAN
Triumph Taiwan
Motorcycles Limited
Tel: 886 2 8511 0185
Fax: 886 2 8511 0187

UNITED KINGDOM
Triumph Motorcycles Limited
Tel: 44 1455 251700
FAX: 44 1455 453104

USA
Triumph Motorcycles
(America) Ltd
Tel: 1 678 854 2010
Fax: 1 678 854 2025

VENEZUELA
Corporacion Automotriz RV, C.A.
Tel: 58 212 953 7772
Fax: 58 212 952 6684

Your local dealer:

www.triumphmotorcycles.com

